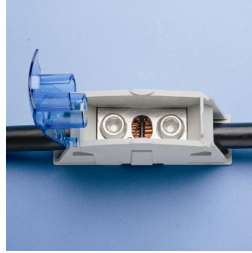
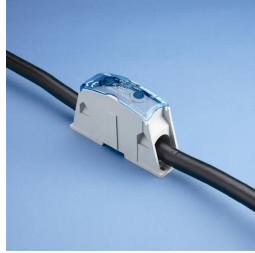
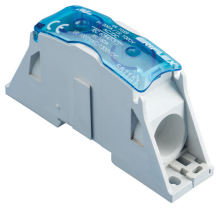
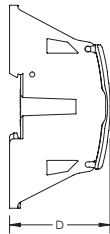
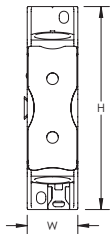


Cable to Cable Power Block – SB160 (561151)



- Compact power block with high short circuit current rating
- Tinned copper block allows for copper or aluminum conductor connections
- Screw retaining cover is hinged and removable
- Design allows for visual inspection of conductor and confirmation of connection
- Gangable for building multi-pole power blocks
- Easily clips onto DIN rail or mounts to panel with screws
- 95% fill ratio
- Halogen free
- RoHS compliant



Part Number	SB160
Article Number	561151
Material	Copper Thermoplastic
Finish	Tinned
Max Current Rating, IEC	250 A
Max Current Rating, UL	200 A
Peak Short Circuit Current (I _{pk})	42 kA
Short Circuit Current Rating (SCCR)	100 kA
Max Working Voltage, IEC (U _i)	1,000 VAC 1,500 VDC
Max Working Voltage, UL (V _{in})	1,000 VAC/DC
Line Side Number of Connections	1
Line Side Compact Stranded Wire Size	35 – 70 mm ²
Line Side Wire Size	#2 – 3/0
Load Side Number of Connections	1
Load Side Compact Stranded Wire Size	35 - 70 mm ²
Load Side Stranded Wire Size - Ferrule	35 - 70 mm ²
Load Side Wire Size	#2 – 3/0
Enclosure Rating	IP 20
Depth (D)	55 mm



Part Number	SB160
Height (H)	111 mm
Width (W)	27.7 mm
Unit Weight	0.18 kg
Certification Details	UL® 1059
Flammability Rating	UL® 94V-0
Complies With	IEC® 60947-7-1
Certifications	EAC 0234267 (Russian Federation) UR
Standard Packaging Quantity	1 pc
UPC	78285679038
EAN-13	8711893137293

Design Guideline for Distribution Blocks, Power Blocks and Power Terminals										
Derating according to Ambient* Temperature (°C) to maintain working temperature of 85°C										
Ambient Temperature (°C)	30°	35°	40°	45°	50°	55°	60°	65°	70°	75°
Derating Coefficient (d)	1	1	1	0.94	0.88	0.82	0.75	0.67	0.58	0.47
*environment around the terminal blocks inside the enclosure										

IEC is a registered trademark of the International Electrotechnical Commission. UL, UR, cUL, cUR, cULus and cURus are registered certification marks of UL LLC.

WARNING

ERICO products shall be installed and used only as indicated in ERICO's product instruction sheets and training materials. Instruction sheets are available at www.erico.com and from your ERICO customer service representative. Improper installation, misuse, misapplication or other failure to completely follow ERICO's instructions and warnings may cause product malfunction, property damage, serious bodily injury and death.

Copyright © 2015 ERICO International Corporation. All rights reserved.

CADDY, CADWELD, CRITEC, ERICO, ERIFLEX, ERITECH, and LENTON are registered trademarks of ERICO International Corporation.

